

# Quality of Life in the BAYFIELD COUNTY area

## Health Care

- 24-Hr Emergency Access
- MMC Cancer Center
- Rehabilitation Services
- North Lakes Community Health Center  
Ashland, Washburn & Iron River
- Elderly / Long-Term Care Facilities

## Unique Venues & Events

- Lake Superior Big Top Chautauqua
- American Birkebeiner XC Ski Race
- Bayfield Apple Festival
- Book Across the Bay
- Grand View Firehouse 50 Bicycle Road Race
- WhistleStop Marathon
- Chequamegon Bay Birding & Nature Festival

[www.travelbayfieldcounty.com](http://www.travelbayfieldcounty.com)

## Higher Education






- Wisconsin Indianhead Technical College - Ashland  
[www.witc.edu/ashland](http://www.witc.edu/ashland)
- University of Wisconsin - Superior  
[www.uwsuper.edu](http://www.uwsuper.edu)
- Northland College - Ashland  
[www.northland.edu](http://www.northland.edu)
- Lac Courte Oreilles Ojibwa Community College  
[www.lco.edu](http://www.lco.edu)

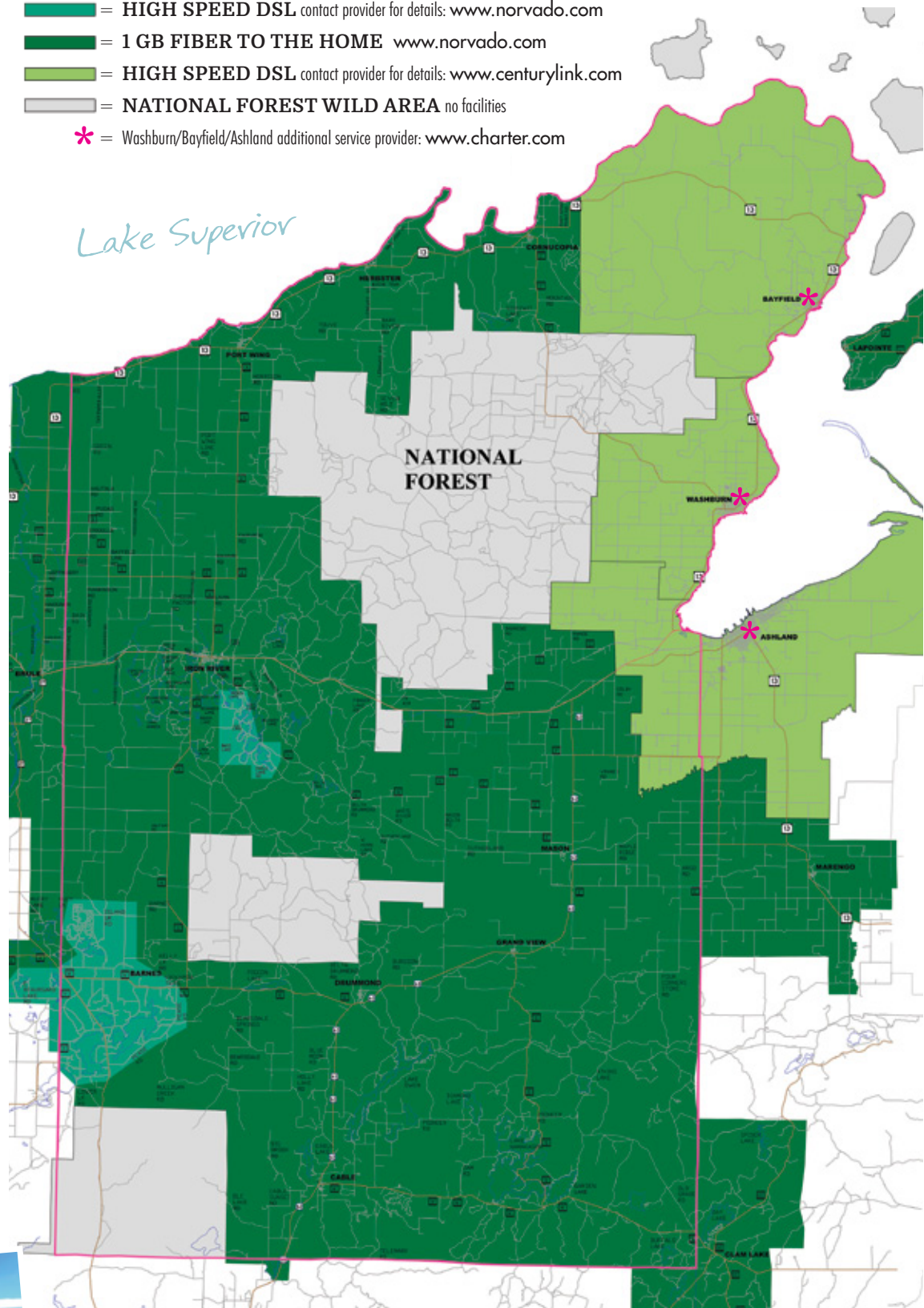
## Recreation - *Unlimited!*

- Apostle Islands National Lakeshore
- Sailing & Boating
- Hunting & Fishing
- Kayaking & Paddle Boarding
- Cross Country & Downhill Skiing
- Hundreds of miles of trails:  
ATV/UTV, Bike, Hike, Snowmobile



# BAYFIELD COUNTY Broadband AVAILABILITY MAP

-  = HIGH SPEED DSL contact provider for details: [www.norvado.com](http://www.norvado.com)
-  = 1 GB FIBER TO THE HOME [www.norvado.com](http://www.norvado.com)
-  = HIGH SPEED DSL contact provider for details: [www.centurylink.com](http://www.centurylink.com)
-  = NATIONAL FOREST WILD AREA no facilities
-  = Washburn/Bayfield/Ashland additional service provider: [www.charter.com](http://www.charter.com)



*"Love where you work."*

**Bayfield County**

ECONOMIC DEVELOPMENT CORPORATION

PO Box 704, Washburn, WI 54891

[www.bayfieldcountyedc.com](http://www.bayfieldcountyedc.com)